



Community & Cancer Science Network

Collaborative Work Groups – Authentic Community Collaboration to Reduce Wisconsin’s Breast and Lung Cancer Disparities

Staci Young,¹ David Frazer,² Tim Meister,¹ Tobi Cawthra,¹ Laura Pineseault,³ Felicia Fairfield,⁴ Claire Piehowski,⁴ Jada Proctor,⁵ Kailey Taebel,⁵ Melinda Stolley¹

¹Medical College of Wisconsin, ²Center for Urban Population Health, ³Evaluation Plus, ⁴Wisconsin Women’s Health Foundation, ⁵YWCA Southeast Wisconsin



CUPH
Center for Urban Population Health
Data-driven. Evidence-based.
Community-engaged.

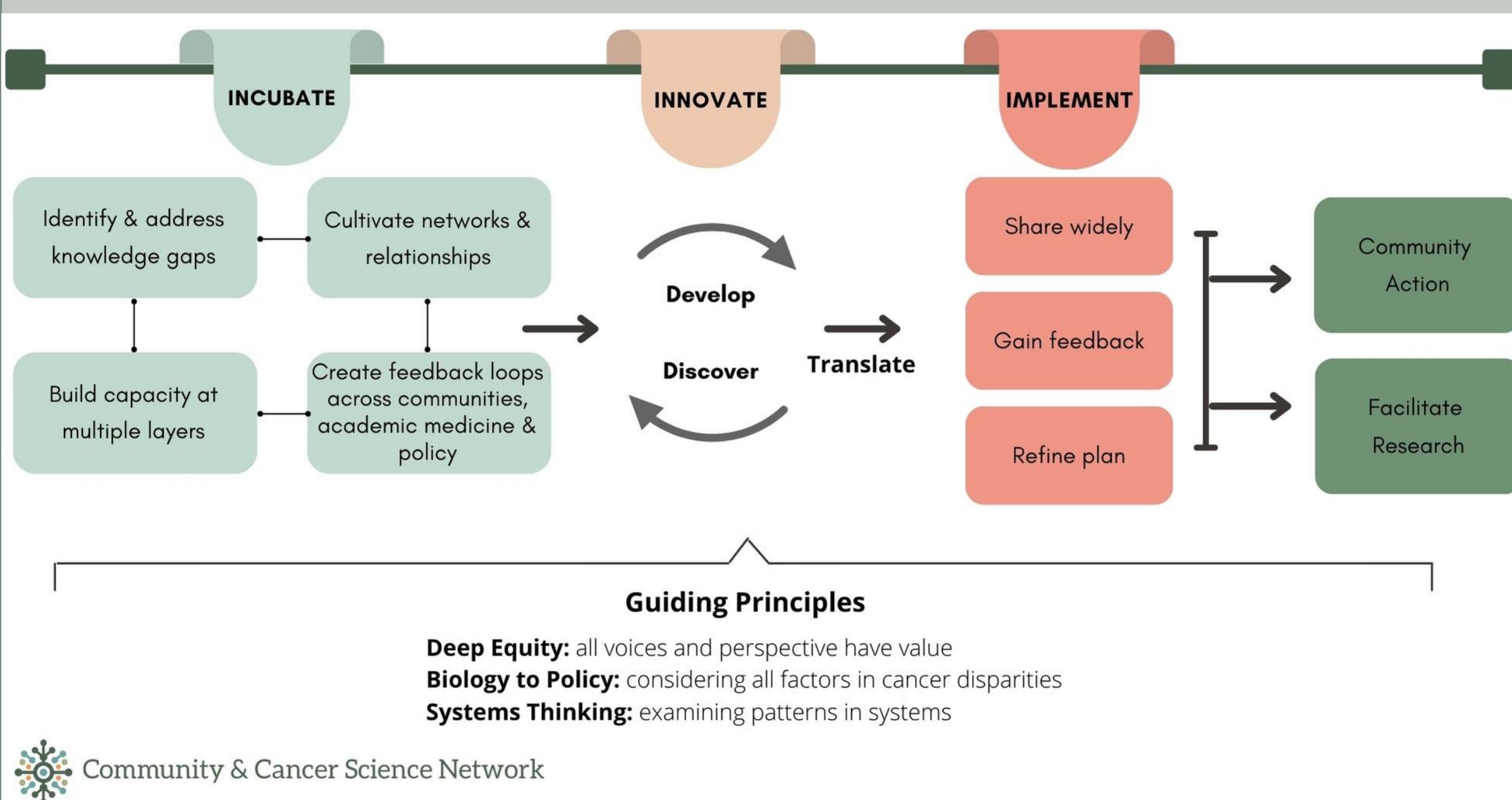
eliminating racism
empowering women
ywca
Southeast Wisconsin

BACKGROUND

Complex problems require a deep understanding of the issue and a collaborative approach to find sustainable solutions. Cancer disparities are complex and must be understood from a broad set of perspectives across the academic spectrum and non-academic sources (i.e., community members, community-based organizations, and policymakers).

The Community and Cancer Science Network (CCSN) is a transdisciplinary network focused on addressing statewide cancer disparities. The CCSN grounds its approach in the principles of **deep equity**, **systems-change**, and the **integration of biology to policy**. It brings together diverse perspectives through a three-phase model.

CCSN INITIATIVE FRAMEWORK

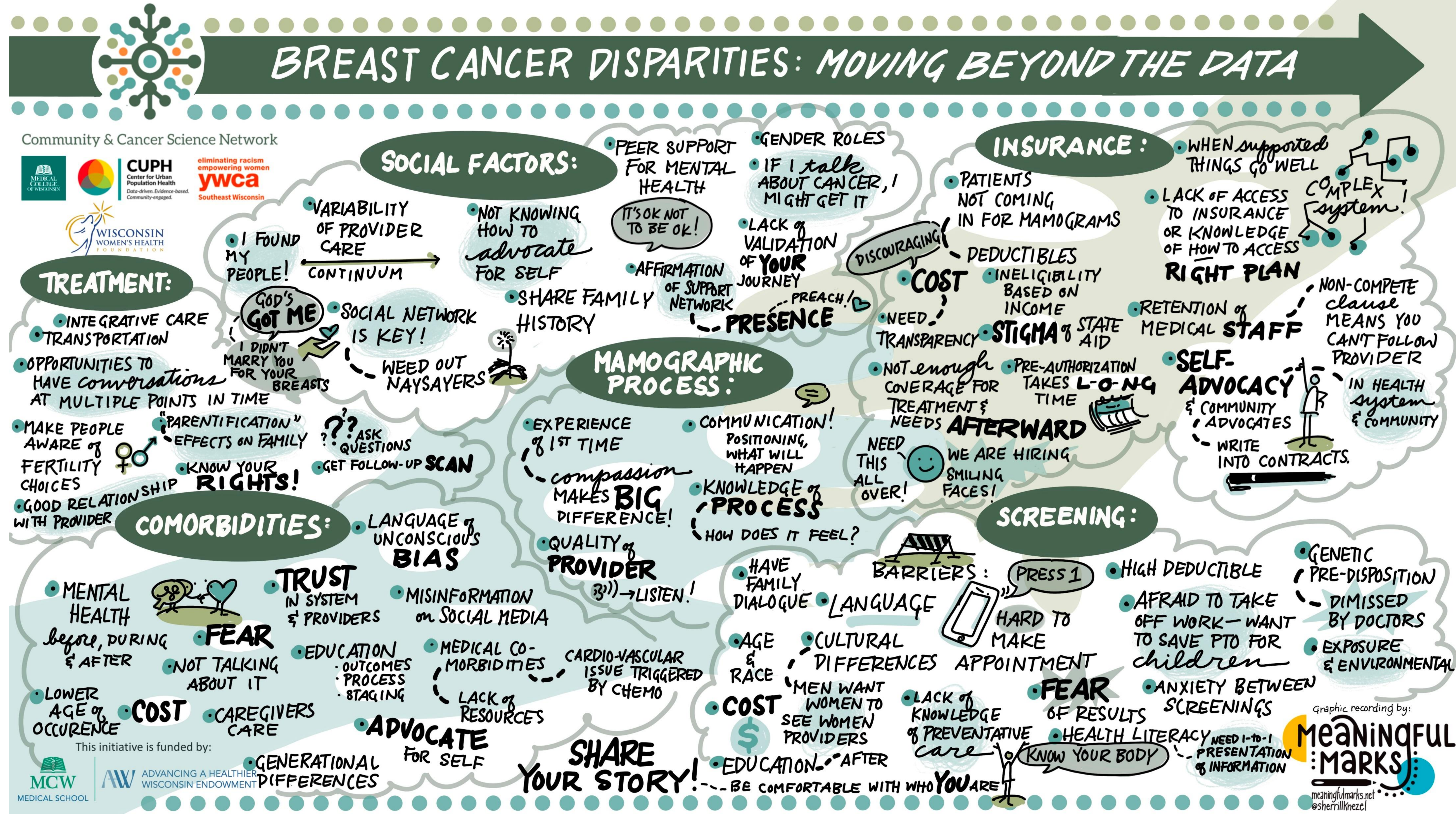


COLLABORATIVE WORK GROUPS

Collaborative Work Groups (CWG) is a CCSN program that brings researchers and community partners in collaboration to address breast and lung cancer disparities statewide using a transdisciplinary approach to understand cancer disparities and create solutions grounded in CCSN’s three guiding principles.

CWGs have been actively engaged since the Spring of 2022 in several Wisconsin communities working to uncover the complex factors that drive breast and lung cancer disparities at the local level.

Guided by a human-centered design process, the groups are defining the local scope of the problem, integrating diverse perspectives into root cause analyses, and designing solutions that will target the disparities.



BREAST CANCER WORLD CAFÉ

As part of data gathering to inform community level priorities, three CWGs collaborated to host a World Café event, a methodology for facilitating a large group dialogue, focused on breast cancer disparities.

- The CWGs invited **community members, breast cancer survivors and co-survivors, health care providers, allied health professionals, and breast cancer advocacy organizations** from three different counties to attend.
- Approximately 80 attendees gathered at small tables centered around various topics associated with breast cancer disparities including mammography access and process, social factors, co-morbidities, screening, insurance, and treatment.
- At each table, attendees discussed the topic and recorded their thoughts on a large notepad, and after 20 minutes switched to a different topic table and added on to previous contributions. Following the three rounds, a representative of each table reported the findings to the entire group.
- A graphic recorder captured the discussion, table notes were preserved, and attendees provided feedback on the meeting. Open coding validated the graphic recorder. Results of the World Café provided CWGs with data on community priorities.



CONCLUSIONS and NEXT STEPS

- A World Café event is an effective methodology for collecting robust data on solutions for multi-county efforts involving diverse, transdisciplinary voices.
- The event demonstrated two key values of the CCSN: reliance on transdisciplinary relationships to nurture collaboration and the prioritization of building capacity with the community to lead local efforts to improve health outcomes.
- CWGs can contribute to eliminating cancer disparities in communities through a human centered design process that integrates diverse sectors with knowledge of biology, behavior, and the socio-cultural and physical environments, and creates an equitable voice for all participants to contribute to designing viable solutions.
- CWGs will leverage the lived experience, knowledge, and insight generated from the World Café event to inform the development of project strategies to implement in the affected communities to reduce breast and lung cancer disparities.